

# BURLEY®

## TAIL WAGON™



Owner's Instruction and Safety Manual

# Congratulations!

You've just purchased a Burley® trailer, the leading choice of discriminating pet trailer owners worldwide. Every effort has been made to ensure your purchase is of top quality and proven design, ready to provide you with many years and miles of happy, safe trailer use with your animal companion.

## IMPORTANT:

Because some of the features and guidelines for using your Burley merit close attention, it is very important that you familiarize yourself with the trailer by reading this entire manual before use. If you have any questions, please contact your Authorized Burley Dealer or check our website at [www.burley.com](http://www.burley.com).

## Table of Contents

Introduction	Pg. 3
Safety Guidelines	Pg. 3
Hardware Bag Contents and Tool Lists	Pg. 6
Mounting the Reflectors	Pg. 6
Attaching the Wheels	Pg. 6
Installing the Frame	Pg. 7
Snapping the Fabric Sides and Ends Around Frame	Pg. 7
Installing the Cover	Pg. 7
Attaching the Tongue	Pg. 8
Installing the Safety Flag	Pg. 9
Hitching Your Tail Wagon™ to Your Bicycle	Pg. 9
Safety Checklists	Pg. 10
Maintenance and Storage	Pg. 11
Parts List and Diagram	Pg. 12
Warranty	Pg. 14

## Introduction

Your Burley is shipped partially assembled from the factory. Initial assembly should take about 15 to 20 minutes. Before using your trailer, be sure you have a thorough understanding of how the trailer hitch operates. Make sure the trailer wheels and hitch are securely attached. Once you've read the safety guidelines, you're ready to go!

## NOTE:

Any reference to left or right is made in the direction of travel, as if you were sitting on the bike seat looking forward.

## Safety Guidelines

Bicycling with a trailer is different from bicycling without one, in ways which aren't always obvious. It is essential that you read and understand all of the following safety guidelines—in addition to the warnings and instructions—prior to using your trailer. Contact your Authorized Burley Dealer or Burley if any of these instructions are unclear.

## WARNING

**Bicycling with a trailer, and bicycling in general, can be hazardous. Failure to observe any of the safety guidelines in this manual could result in accident and serious injury or death.**

### Use a Well-Maintained Bicycle and Trailer

Use a bicycle which is in good working condition, with good brakes. A frequent safety check of your bicycle is essential. Inspect and maintain your trailer before each ride and monthly, as outlined in the "Safety Checklists" of this manual. Have your Authorized Burley Dealer maintain and inspect your bicycle and trailer if you are not qualified to do so.

### Starting and Stopping

Because of the trailer's additional weight, a bicycle pulling a trailer will be slower to start and stop, and because of its length, requires more time to cross streets or paths. Your entire vehicle is heavier and less responsive. Think ahead and anticipate stops, turns, and starts. Experiment with your pet in the trailer in an uncongested area to become familiar with how your heavier, longer vehicle responds.

## Prevent Trailer Tip Over

Like automobile and motorcycle trailers, bicycle trailers can tip over. Do not pull your trailer over curbs or hit holes or other road obstructions. Do not make high-speed turns or descents when pulling the trailer. Always corner with caution at 5 mph or less, as the trailer cannot lean into a turn the way a bicycle can. Do not travel faster than 15 mph—all road irregularities and your slower reaction time are greatly magnified. Ensure that your pet remains calm and within the confines of the trailer at all times. If your pet jumps or lunges while in the trailer, it may cause the trailer to tip over.

## WARNING

**Trailers can tip over, causing damage to the trailer and serious injury to the cyclist or pet. AVOID causes of tip over, especially:**

- Pet jumping or lunging
- Hitting potholes, curbs, other road obstructions
- Taking turns too fast
- Sudden swerving
- Off-banked turns
- Improper wheel installation
- Improper tire inflation

## Carry Pet Passengers Only

The Tail Wagon is designed for pets. Never use it for transporting people!

## No Motorized Vehicles

Never pull your Burley trailer with a motorized vehicle, as the increased acceleration and speed could damage the trailer or cause it to tip over.

## Always Use Your Cover

To protect your pet from jumping from the moving trailer, always use your cover. Never leave your pet unattended. Periodically check to make sure your pet is comfortable.

## Wear a Helmet

Numerous studies have shown that head injury is the leading cause of bicycling fatalities. Helmets prevent or reduce bicyclists' head injuries; it is essential that you use an approved bicycling helmet at all times.

## Proper Wheels and Tires are Essential

Use only the factory-supplied wheels, and keep them properly maintained. Inflate your tires to 30–35 P.S.I. and check the pressure before each use.

## Know Your Trailer Hitch

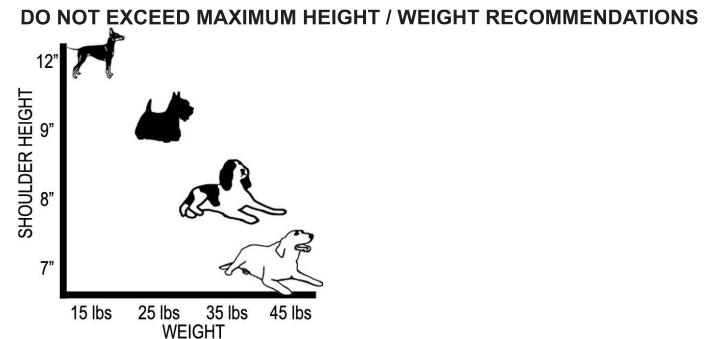
Clamp the hitch securely to the bicycle frame, and check for a tight attachment each time you use the trailer. Refer to “Hitching Your Burley to Your Bicycle” and “Maintenance and Storage” sections of this manual for the proper installation, use and maintenance of your hitch.

## Use Your Safety Flag

Always use the safety flag—it will help make you more visible to motorists and other cyclists.

## Observe Height/Weight Restrictions

This trailer is designed only for one pet up to 50 lbs. (22 kg. in Europe). Your pet may need to remain lying down in the trailer to make sure that its shoulder height does not exceed the recommended height for the corresponding weight. Never carry a larger pet, as the extra weight and higher center of gravity may cause the trailer to tip over.



## Loading Your Trailer

A cat or other small pet can be placed in a pet carrier inside the trailer. Train your animal companion to sit or lie when the trailer is in motion. Never tow an excitable pet, as it may lunge or jump, causing the trailer to tip over.

## Using Your Trailer

In the beginning, take short trips to allow your pet to become accustomed to the trailer. Never leave your pet unattended. Always use your trailer cover, and keep the zipper zipped when your pet is inside the trailer. Do not trailer in environments where your pet may become excitable. Never use the trailer if it is damaged in any way. Do not make modifications to the Tail Wagon, as alterations may result in a structurally unsound and unstable trailer.

# Hardware Bag Contents and Tool List

## IMPORTANT:

Please verify that you have received all of the contents listed. Do not proceed with the assembly if any parts are missing; contact your Authorized Burley Dealer or Burley immediately for replacement parts.

## Hardware Bag Contents

- (2) Quick-Release Levers
- (2) Clear front reflectors
- (2) Red rear reflectors
- (4) Hex head reflector screws
- Warranty Card
- Burley Owner's Manual

Tool Required: Phillips screwdriver

## NOTE:

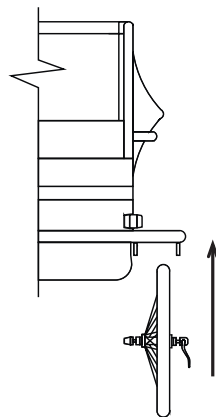
The trailer front has the black plastic tongue receptor on the left side of the frame. The rear has the Burley logo printed on the fabric end.

## Mounting the Reflectors

Clear front reflectors are mounted horizontally in the two reflector brackets on the front of the trailer frame. The TOP is marked on the reflector front. Snap the posts on the reflector into the holes in the reflector bracket, with the open post to the top. Insert the screw through the hole and into the open post hole, and tighten snugly. Repeat for the other side. Mount the two red reflectors horizontally in the two brackets on the rear of the trailer frame, in the same way.

## Attaching the Wheels

First, verify that the tires are inflated to 30-35 P.S.I. Tip the trailer frame onto its rear. Place the wheel between the wheel dropouts. Unscrew nuts from the quick release levers. With the quick-release lever in the "OPEN" position, insert the lever through the wheel, making sure that the horizontal shaft goes all the way through the axle and dropouts. Once the wheel is fully seated, tighten the thumb nut. You should feel resistance halfway through tightening the lever. Position the quick-release lever so that it is aimed to the rear of the trailer in the "CLOSED" position (the lever is marked for OPEN or CLOSED positions). Repeat for the other wheel.



## ! WARNING

**Make sure the wheels are held securely, with the quick release lever fully inserted into the hollow axle. You should not be able to rock or shift the wheels. Improperly installed wheels can fall off, causing an accident or serious injury.**

## Installing the Frame

**Note:** The trailer rear has the Burley logo printed on the fabric end.

**Rear:** Slip tubing ends of rear frame hoop (the U-shaped frame piece) onto the tubing guides on the trailer rear end. Depress the buttons and slide the tubing completely on.

**Front:** Slip tubing ends of front frame hoop/top bar assembly onto the tubing guides on the trailer front. Depress the buttons and slide the tubing completely on. Unscrew the knob end and set it aside. Line up top bar end with the hole in the rear hoop center, and screw the knob in. With a Phillips screwdriver, tighten the screw on the underside of the rear end of the top bar.

## Snapping Fabric Sides and Ends Around Frame

Flip the fabric sides of the trailer up, with the ends of the metal side rods inside the frame hoops. Wrap the webbing ends around the frame hoops from the inside to the outside, and connect the snap caps to the snap studs on the frame hoops. Then flip the front and rear ends up and wrap their webbing ends around the frame hoops from the outside to the inside, above the snapped webbing for the sides. Connect the snap caps on this webbing to the snap posts on the front and rear fabric ends.

## Installing the Cover

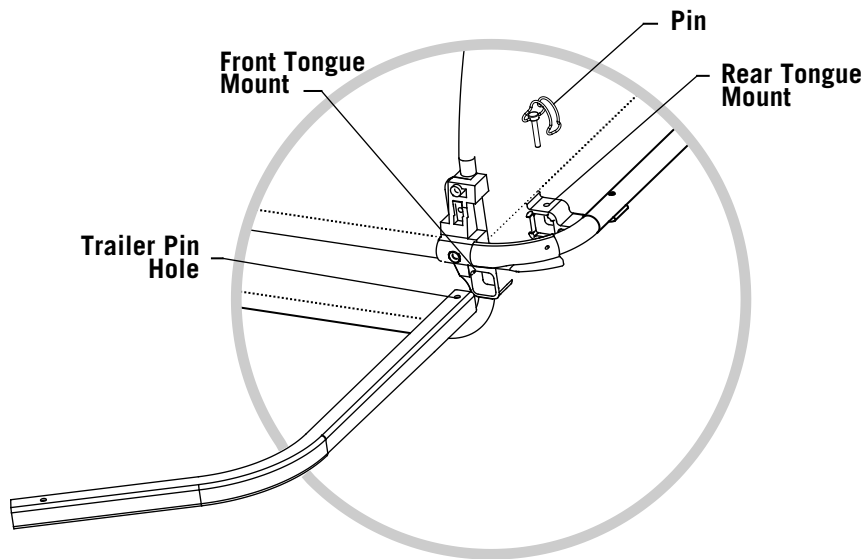
Unzip the back of the cover. Unscrew the knob from the center of the rear hoop. Place the cover over the frame, and line up the grommet on the cover with the knob hole on the rear hoop. Replace the knob and screw it in. Use the pull tabs below the side snaps caps to pull the cover into position. Starting at the front of one side, snap the snap caps on the cover to the corresponding snap posts on the fabric sides. Repeat for the other side. On the trailer rear, zip the zipper closed.

## Attaching the Tongue

Tip the trailer onto its rear end and locate the two tongue receptacles on the trailer's left side. Remove the retaining pin from the rear tongue receptacle. Slide the tongue all the way through both tongue receptacles. Line up the hole on the tongue with the hole in the rear tongue receptacle. Insert the retaining pin through both holes. Once inserted, rotate the pin's spring clip to engage the pin underneath the tongue receptacle. Always check to ensure the tongue is properly installed before using the trailer.

## ⚠️ WARNING

**Never operate the trailer without the retaining pin locked in place. Unlocked tongue can loosen or detach and cause an accident resulting in serious injury.**



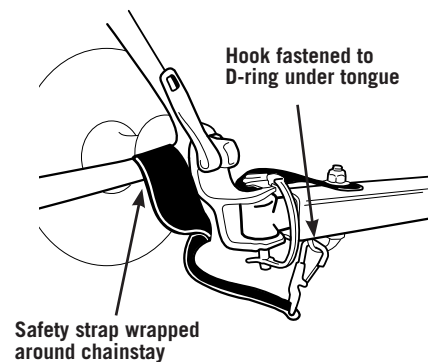
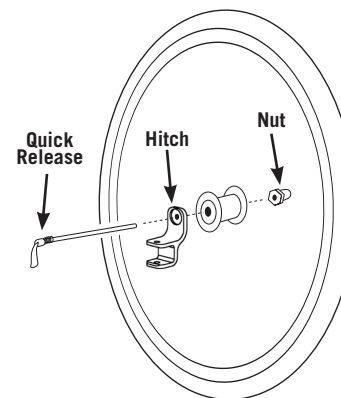
## Installing the Safety Flag

Join the two flag pole sections together. On the left rear side of the trailer, insert the flag pole through the webbing loop on the cover and down into the flag pocket on the side. **DO NOT USE YOUR TRAILER WITHOUT THE SAFETY FLAG IN PLACE.**

## Hitching Your Burley to Your Bicycle

The Burley standard trailer hitch was designed to quickly and safely attach to virtually all types of bicycles. It is attached to the left rear dropout (the non-chainring side) of your bicycle.

1. Remove the quick release lever assembly from your bike and set it aside.
2. Line up the hole on the flat side of the hitch upper arm with the left rear dropout hole.
3. Reassemble the quick release assembly through the hitch and dropout, but don't tighten it yet.
4. Slide the hitch receiver end of the tongue between the two hitch side arms, and line up the holes. The hitch should clear any racks, bags, or fittings you have on your bicycle. If there is any interference, contact your Authorized Burley Dealer.
5. Open the retaining pin and insert the pin through the holes.
6. Rotate the pin's spring clip and close the pin.
7. Now tighten the quick release lever, with the lever pointing to the rear of the bike. When properly adjusted, you will feel resistance halfway through tightening the lever (when the lever is pointing straight out away from the bike).
8. Wrap the safety strap around the inside of the chain stay twice and then over the hitch body. Fasten the hook to the D-ring on the underside of the tongue end.



## **WARNING**

**The quick release lever must be in the closed position. Do not operate the trailer without the hitch safety strap properly installed. A dangling safety strap can contact the spokes and damage the rear wheel or cause an accident resulting in a serious injury. The hitch must seat properly into the stays and not interfere with racks, bags, or fittings. Inspect the hitch and tongue frequently for damage or loose fasteners. Interfering parts or damaged hitch can cause an accident resulting in serious injury. Do not use or store trailer at temperatures below 32° Fahrenheit (0°C) as the hitch rubber flex connector can become brittle and possibly break, causing an accident resulting in serious injury.**

## **Safety Checklists**

### **Before Each Ride:**

- Wheels tightly attached
- Tire pressure at 30–35 P.S.I.
- Hitch properly secured with safety strap in place
- Locked retaining pin for tongue
- Maximum load 50 lbs. (22 kg. in Europe)
- Bicycle safety check, especially brakes and tires
- Helmet for rider
- Safety flag in place
- Ensure pet is calm

### **Monthly Checklist**

- Inspect tongue and hitch for damage, scratches, or loose fasteners
- Inspect frame tubing and hardware for cracks, damage, or loose parts
- Inspect tires for wear and cracks
- Inspect wheels for trueness and cracks
- Inspect wheel bearings for wear
- Inspect fabric parts for rips, abrasion, or missing or damaged hardware
- Contact Authorized Burley Dealer for repairs/replacement of any damaged or worn-out parts

## **Maintenance and Storage**

### **Hitch and Tongue Maintenance**

Do not use or store trailer at temperatures below 32°F (0 C), as hitch rubber flex connector can become brittle and possibly break, causing accident resulting in serious injury.

### **Fabric Care**

Your trailer body is made of a tough, waterproof polyester fabric, which is highly resistant to fading. It can be easily cleaned with any mild soap or detergent and warm water. For heavy soiling, use a nylon bristle brush. Do not use bleach for cleaning, as it will damage the fabric. The fabric is an important part of your trailer's structure, and provides a protective environment for your pet. Replace any fabric that is ripped, scuffed, or otherwise damaged. Polyester fabric will eventually fade, especially when exposed to direct sunlight. To extend the life of your trailer, wipe it dry (to help avoid mildew) and store it out of direct sunlight in a dry, well-ventilated area.

## **WARNING**

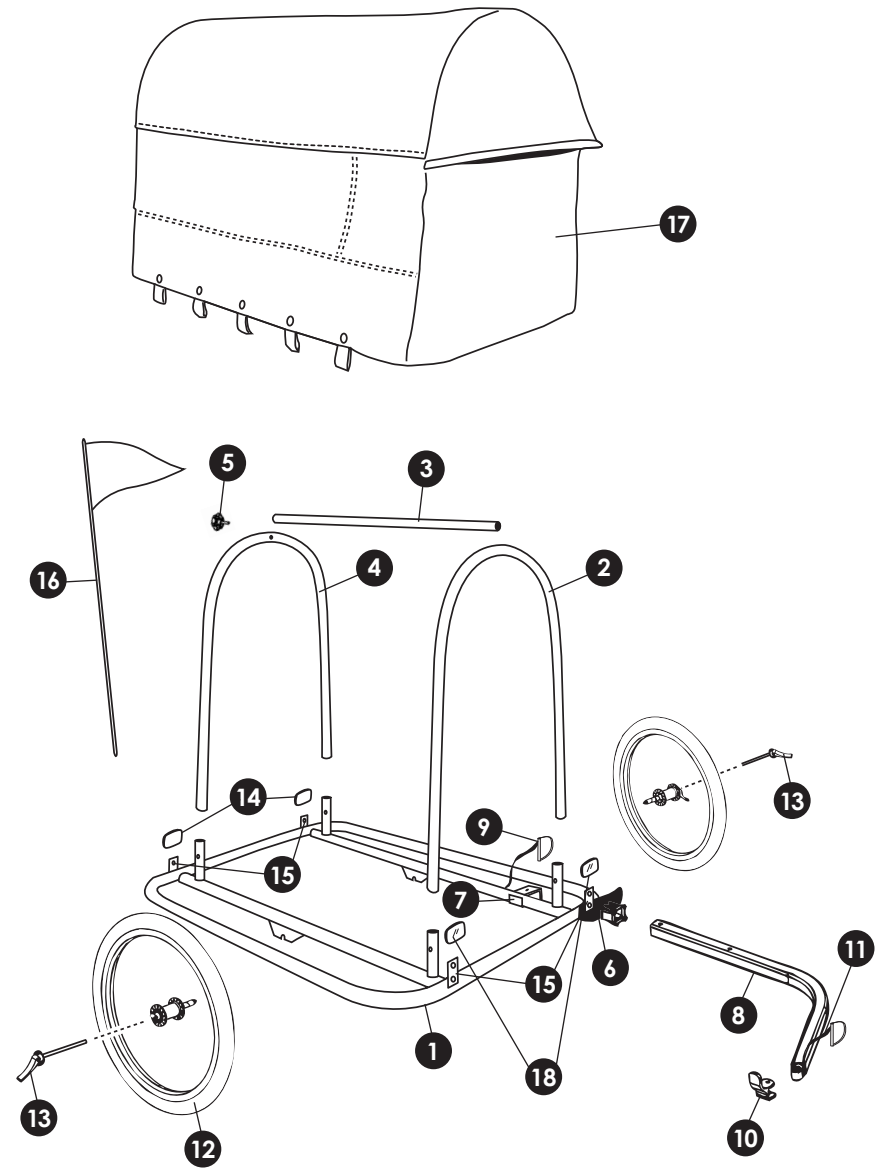
**Using the trailer with damaged or ripped fabric may cause harmful contact between your pet and the spokes or pavement, and cause serious injury. Replace damaged components immediately.**

# Tail Wagon™ Parts List and Diagram

Note: Contact Burley about parts not listed.

1. (1) Preassembled Main Frame Assembly
2. (1) Front Hoop
3. (1) Top Bar
4. (1) Rear Hoop
5. (1) Knob
6. (1) Front Tongue Receptacle, Plastic
7. (1) Rear Tongue Receptacle, Metal
8. (1) Tongue Assembly
9. (1) Retaining Pin
10. (1) Hitch
11. (1) Hitch Safety Strap
12. (2) Wheel, Tire and Tube Assembly
13. (2) Quick Release Levers
14. (2) Red Reflectors
15. (4) Reflector Brackets
16. (1) Safety Flag
17. (1) Tail Wagon Cover
18. (2) Clear Reflectors

Bottom bag and platform not shown for clarity.



## **Burley Trailer Limited Warranty**

Burley will repair or replace parts it determines to be defective as follows: fabric parts for one year, plastic parts for five years and durable frame parts for the lifetime of the trailer. The owner of a Burley trailer must present the trailer for repair at an Authorized Burley Dealer, together with an original sales receipt or similar proof of purchase. This warranty applies only to the original owner and is nontransferable. Burley can not be responsible for failure due to improper assembly, modification of parts or instructions, neglect, abuse, accident, and/or normal wear. The warranty does not cover any trailer used for rental, competition, or commercial use.

**Burley neither assumes nor authorizes any person to assume any other liability in connection with Burley product, and there are no oral agreements or warranties collateral to or affecting this agreement.**

This warranty gives you specific legal rights and you may also have other rights which vary from state to state.



# BURLEY®

Copyright ©2007 by Burley Design, LLC  
“Burley” is a registered trademark of Burley Design LLC  
Burley Design, LLC • 4020 Stewart Rd • Eugene, OR 97402  
541.687.1644 • Fax 541.687.0436 • [www.burley.com](http://www.burley.com)

170008 pet trailer manual r0 rev. 02/07